

MLP-35

Operator's Manual



PRINTEKMOBILE™

Printek LLC
3515 Lakeshore Dr.
St. Joseph, MI 49085
269-925-3200
www.printek.com

□



This device fulfills the European standards requirements by complying with the Directive relating to electromagnetic compatibility and relating to low-voltage electrical equipment. Furthermore, it fulfills the requirements for RoHS and R&TTE if applicable.

Conformity with the above-mentioned Directives is indicated by the CE symbol attached to the device.

Note: Conformity may be affected by:

- using interface cables not complying with the specifications
- non-observance of important instructions in the operator's manual
- installing components not approved for this device by the manufacturer
- unauthorized manipulation



Dieses Gerät erfüllt die Anforderungen der Europäischen Normen durch Einhaltung der Richtlinien bezüglich der Elektromagnetischen Verträglichkeit sowie bezüglich Elektrischer Betriebsmittel mit Niederspannung. Des Weiteren werden die Anforderungen bezüglich RoHS und falls anwendbar R&TTE erfüllt.

Die Konformität zu den oben angeführten Richtlinien ist durch das am Gerät angebrachte CE-Zeichen gekennzeichnet.


Hinweis: Die Konformität kann beeinflusst werden durch:

- Benutzung von nicht spezifizierten Schnittstellen
- Nichtbeachtung wichtiger Hinweise der Bedienungsanleitung
- Ersetzen von Bauteilen, die nicht vom Hersteller für dieses Gerät freigegeben wurden
- Eingriffe durch Unbefugte



This device complies with the requirements of the United Kingdom (UK) legislation of Electrical Safety Regulations, Electromagnetic Compatibility Regulations, if applicable the Radio Regulations and the Restriction of the Hazardous Substances in Electrical and Electronic Equipment Regulations.



 (Waste electrical products should not be disposed of with household waste. Please recycle where facilities exist. Check with your Local Authority or local store for recycling advice.)



This device complies with Part 15 of the FCC Rules. Operation is subject to the following two conditions: (1) this device may not cause harmful interference, and (2) this device must accept any interference received, including interference that may cause undesired operation.

This equipment has been tested and found to comply with the limits for a Class B digital device, pursuant to Part 15 of the FCC rules. These limits are designed to provide reasonable protection against harmful interference in a residential installation. This equipment generates, uses, and can radiate radio frequency energy and, if not installed and used in accordance with the instructions, may cause harmful interference to radio communications. However, there is no guarantee that interference will not occur in a particular installation. If this equipment does cause harmful interference to radio or television reception, which can be determined by turning the equipment off and on, the user is encouraged to try to correct the interference by one or more of the following measures:

- Reorient or relocate the receiving antenna.
- Increase the separation between the equipment and the receiver.
- Connect the equipment into an outlet on a circuit different from that to which the receiver is connected.
- Consult the dealer or an experienced radio/TV technician for help.

This equipment complies with Canadian and FCC radiation exposure limits set forth for an uncontrolled environment. This transmitter must not be co-located or operating in conjunction with any other antenna or transmitter.

Part 15.21 Caution: Changes or modifications not expressly approved by Printek could void the user’s authority to operate the equipment.



Statement of compliance:
The following products have been tested and comply with FCC Part 15, Subpart B and ANSI C63.4-2014 standard limits.

Printek Branded Mobile Thermal Printers:

Series/Model:	Tested by:	Report number:
Vehicle Pro series, VP420	AGC Attestation of Global Compliance	AGC05548190101FE01, AGC05548190102FE01
Interceptor series, I820	EST Technology Co., Ltd	ESTE-R1709080, ESTE-R1709081
Interceptor series, I80	EST Technology Co., Ltd	ESTE-F2103037
FieldPro series, FP530, FP530L	EMTEK Co., Ltd	ES180516013E, ES180516014E
FieldPro FP530s, Payload	AGC Attestation of Global Compliance	AGC05548180801FE01, AGC05548180802FE01
FieldPro FP541	WH Technology Corp.	CF17110506
MLP Series, MLP35	EST Technology Co., Ltd	ESTE-F1907016

Printek Branded Dot Matrix printers:

FormsPro S100 Series Printer	Underwriters Laboratory	4788630615.1
PrintMaster 700 Series Printer	WH Technology Corporation	CF16100107

These devices comply with Part 15 of the FCC rules. Operation is subject to the following two conditions: (1) These devices may not cause harmful interference, and (2) these devices must accept any interference received, including interference that may cause undesired operation.

Importer:
Dascom Americas
34 Lakeview Court
Verona, VA, 24482 U.S.A.
PH: 540-256-1570
<https://dascomamericas.com>

For Printek branded product information:
<https://www.printek.com>

Dascom President: 
Signature: _____

Date: April 7, 2021

□



Battery Disposal

Only disposes of used batteries according to instructions and/or your local regulations. If you do not know your local regulations, the Rechargeable Battery Recycling Corporation (RBRC) is a non-profit organization created to promote recycling of rechargeable batteries. For more information visit www.rbrc.org

Acknowledgments:

DASCOM is a registered trademark of DASCOM Europe GmbH

Bluetooth is a registered trademark of Bluetooth SIG, Inc.

Zebra, CPCL and ZPL are registered trademarks of Zebra Technologies

Wi-Fi is a registered trademark of the Wi-Fi Alliance

Windows is a registered trademark of Microsoft Corporation

All other trademarks are the property of their respective owners.

© 2015 by DASCOM Europe GmbH, Ulm, Germany. All rights reserved.



Read all set up and operating instructions before proceeding with operation. Do not operate in an enclosure unless properly ventilated. Do not operate near a heat source.



Lesen Sie vor der Inbetriebnahme die Aufbau- und Bedienungsanleitung. Betreiben Sie den Drucker nicht in einem kleinen, geschlossenen Raum, es sei denn dieser wird ordnungsgemäß belüftet. Nehmen Sie den Drucker nicht in der Nähe einer Wärmequelle in Betrieb.



No user-serviceable parts inside. Refer service or repairs to a qualified service professional. Use of genuine DASCOM replacement parts is required to warrant proper, safe operation. Any alteration or modification of this device voids the user warranty and may make the product unsafe to operate. The print head and motors get hot during use. Wait until they cool before touching them. Make certain the printer is disconnected from AC power before removing any covers or performing any required cleaning or maintenance. Connecting this printer to an ungrounded receptacle can result in electrical shock. Never place the printer near inflammable or explosive substances. Do not operate near liquid or spill liquid into the printer at any time.



Enthält keine Teile, die vom Bediener instandgesetzt werden können. Bitte wenden Sie sich bei Instandsetzung oder Reparatur an qualifiziertes Kundendienstpersonal. Die Verwendung von echten DASCOM Ersatzteilen ist notwendig, um ordnungsgemäßen, sicheren Betrieb zu gewährleisten. Änderungen oder Modifikationen dieses Geräts machen die Garantie ungültig und können den sicheren Betrieb des Produkts gefährden. Während des Druckens werden Druckerkopf und Motoren heiß. Warten Sie, bis sich die Teile abgekühlt haben, bevor Sie sie berühren. Vergewissern Sie sich, dass der Drucker nicht mehr an die Stromquelle angeschlossen ist, bevor Sie Abdeckungen abnehmen oder das Gerät reinigen bzw. warten. Schließen Sie diesen Drucker nicht an eine ungeerdete Steckdose an; dies kann zum Elektroschock führen. Setzen Sie den Drucker niemals in die Nähe von feuer- oder explosionsgefährlichen Stoffen. Betreiben Sie den Drucker nicht in der Nähe von Flüssigkeiten und lassen Sie keine Flüssigkeiten in den Drucker gelangen.

Specifications are subject to change without notice.

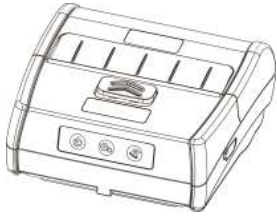
□

Content

Packaging list.....	6
Printer Parts	6
1 Preparation before using.....	7
1.1 Battery installation	7
1.2 Charging the battery.....	7
1.3 Loading Media.....	8
2 Using your printer.....	9
2.1 Power on.....	9
2.2 Paper Feed.....	9
2.3 Self-Test.....	9
2.5 OLED display	10
3 Configurations	10
3.1 Control panel.....	10
3.2 Setting Descriptions:	11
3.3 Installing Configuration Tool	12
3.4 Using Configuration Tool.....	13
3.5 Configuration Settings.....	15
3.6 Reset factory default settings	15
4 Software upgrade.....	16
4.1 Software upgrade steps.....	16
4.2 Hexadecimal Mode:.....	17
5 Communication	18
5.1 USB.....	18
5.2 Bluetooth	18
5.3 Wi-Fi	19
6 Maintenance	20
6.1 Daily Printer Maintenance	20
6.2 Use and storage of paper.....	20
7 Maintenance	21
7.1 Troubleshooting	21
8 Printer Specifications.....	22
9 Accessories.....	22

-
-

Packaging list



Printer(1 pc)



Battery(1 pc)



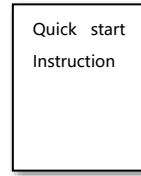
Paper spacer for
2" paper (1 pc)



Power adapter(1pc)



Test paper roll (1 pc)

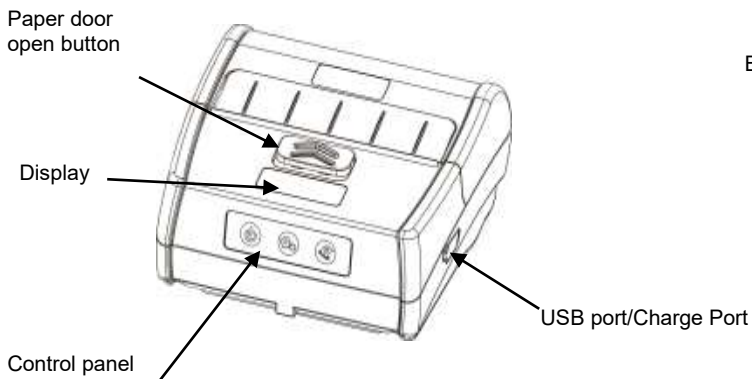


Quick Start Instruction
(1pc)

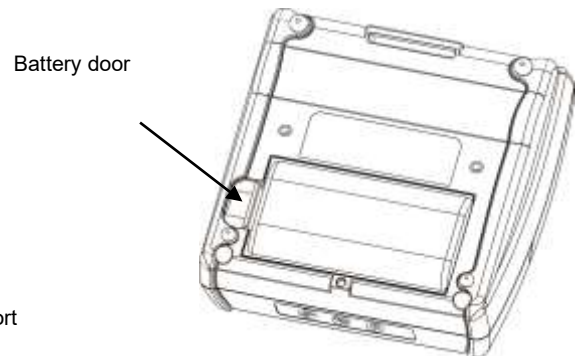
Reference Printek website www.printek.com for MLP-35 Operators Manual

Printer Parts

TOP VIEW



BOTTOM VIEW



□

1 Preparation before using.

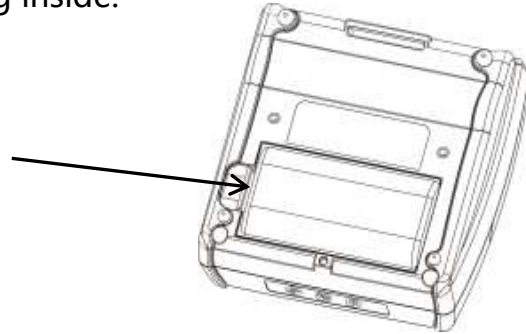
1.1 Battery installation



The battery needs to be fully charged prior to first use. After long-term storage, also fully charge the battery before use to ensure highest performance.

Place battery into printer with the label facing inside.
Press down until you hear an audible click.

To remove battery, depress battery door clip
and pull battery out.

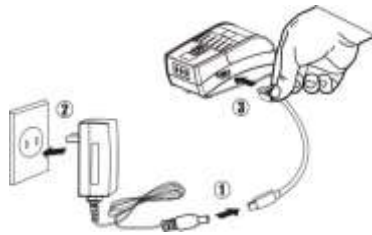


1.2 Charging the battery.



Check the power adapter voltage before connecting the power adapter. If the voltage you use does not match the device, it will damage the adapter and printer. If you use a power adapter that is not provided or approved by Printek, the printer may be damaged, and warranty voided.

Connect the printer via DC to Type-C power cable and plug adapter into wall outlet. Do not remove the battery during charging.



Battery power:

- (1) The battery icon on the display will indicate the battery is charging by flashing the capacity bars.
- (2) Current power of battery will display on LCD as follows:

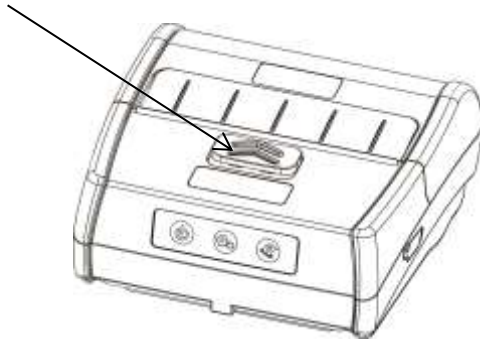
Empty (<5%)	Level 1 (15-40%)
Level 2 (40-70%)	Level 3 (70-100%)

□
1.3 Loading Media

Before printing, please check the media type for printing. The printer prints continuous by default, if you want to print labels, you will need to set the Print Type to Label. Refer to the Configuration section of this manual.

i Please pay attention to the direction of the paper roll. If paper roll is in the wrong direction, it will result in a failure to print.

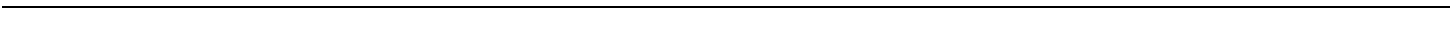
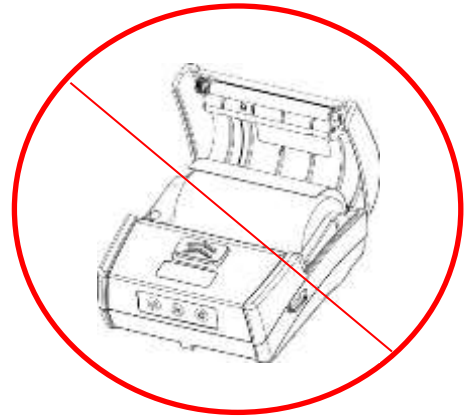
To open paper door slide paper door button in direction of arrows.



Correct way to install paper.




Incorrect way to install paper.



□

2 Using your printer.

2.1 Power on

To power the printer on or off press  for 2 seconds.


2.2 Paper Feed

Feed paper by pressing  on control panel.

Continuous paper will perform a line feed.

Label/Black mark paper will perform a form feed to next label.

2.3 Self-Test

Press  for 3 seconds to print a self test page



PRINTER MODEL: MLP-35
FWVersion: 01.00.00.00
BOOTVersion: 01.00.03
CGVersion: TD24CG2.0
HDVersion: 1.0
FW TIME: Apr 22 2019 14:58:11
Machine No:*****

Production information

【System Setup】
Print speed: 3.0in/s
Energy Mode: 1min
Print density: 3
Emulation: ESC/POS
Recharge Mode: Fast Charge
Code Page: CP864

Printing Configuration data

【Paper Setup】
Print Type: Label/Black
Top: 0mm
LeftMargin: 0mm

【Hard Parameter】
Label AD: 300
BlackSensor AD: 800
Paper Out AD: 2800
PE Sampling AD: 256
Battery temp: 27C

【Device Setup】
Sensor Type: Lable

Character printing

***** End of Test *****

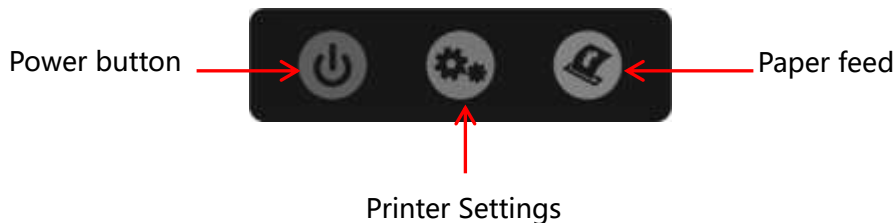
□
2.5 OLED display

Messages

Status	Display	Buzzer
Buffer has data	Working	/
Buffer is empty	Print Ready	/
Cover open	Head Up	Buzz/2s
Paper run out	Paper Out	Buzz/2s
Abnormal label positioning	Calibrate Error	/
No label gap detected	Out Tear Error	/
Print head overheats	Head Hot	/
Energy saving mode	Zzz...	/
FW download mode	Upgrade mode	/
FW is being downloaded	Fw Upgrade...	/
Finish the FW downloading	Upgrade OK	Buzz once
Battery is low	BAT Low	/

3 Configurations

3.1 Control panel



To access the Control Panel Menu:

- Push the Printer Settings button to enter the Configuration Menu.
- Push the paper Feed button to select the menu section.
 - System Setup
 - Paper Setup
 - Device Config
 - Bluetooth Setup
- Push the Printer Settings button to enter the section.
- Push the Paper Feed button to select Menu Selection.
- Push the Printer Settings button to select parameter under the menu section.
- Push the Paper Feed button to change the setting.
- Push the Power button to go back one menu selection.

□

Menu Parameters:

System Setup – Print Speed, Energy Mode, Print Density, Emulation, Recharge mode, Code Page

Paper Setup – Print Type, Top, Left Margin

Device Config – Sensor Type

Bluetooth Setup – BT Name, PIN Code

3.2 Setting Descriptions:

Asterisk * indicates default setting.

System Setup:		
Print Speed	Selects print speed	2.0, 2.5., 3.0* inch/sec
Energy mode	Sets energy setting	OFF, 1min*, 2min, 5min, 10min
Print Density	Sets print darkness	1, 2, 3*, 4, 5, 6
Emulation	Allows for use of different print commands	ESC/POS*, JPL, ZIC, ZPLII, CPCL
Recharge Mode	Sets charging speed	Fast Charge*, Normal
Code Page	Select code page to be used	Many page codes available

Paper Setup		
Print Type	Selects type of paper	Label/Blackmark*, Continuous
Top	Sets first line of print	0mm* to 30mm
LeftMargin	Sets left margin	0mm* to 20mm, -1mm to -20mm

Device Config		
Sensor Type	Set for label type	Positive, Label*, Back

Note: when changing the Sensor Type after saving the change you must cycle the power on the printer to allow for the sensor to re-calibrate. Be sure the label roll is in the printer.

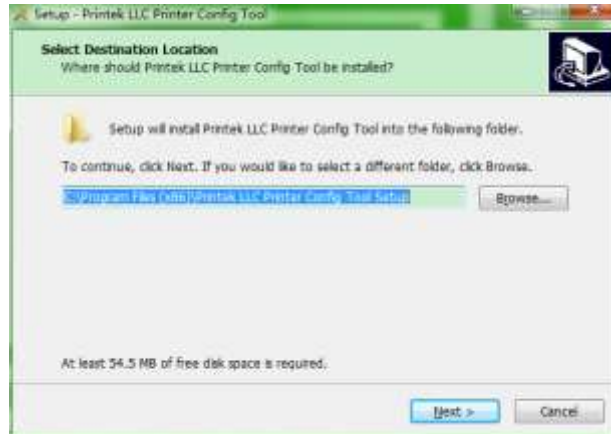
Bluetooth Setup		
Version	Bluetooth version	Factory set (information only)
BT Name	Name displayed when selecting printer through Bluetooth connection	MLP-35
PIN Code	Passkey when connecting through Bluetooth	1234
Bluetooth MAC	Address assigned to Bluetooth interface	Factory set (information only)

□ 3.3 Installing Configuration Tool

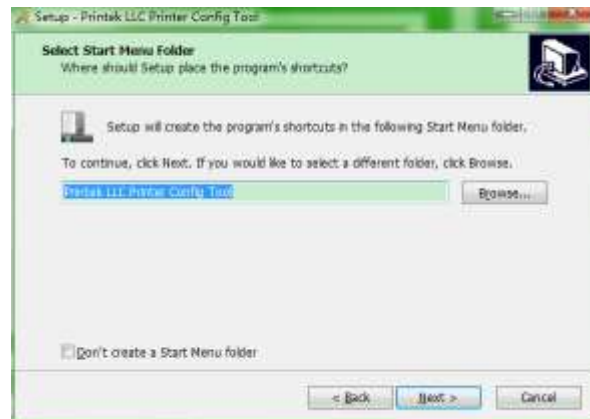
Printek offers a Windows based configuration program, Printek LLC Printer Config Tool, to set up your MLP-35 printer. This can be downloaded from our web page, www.printek.com.

Select Printek LLC Config Tool Setup 1.0.(#).exe" and select installation path.

Click Next.



Click Next.

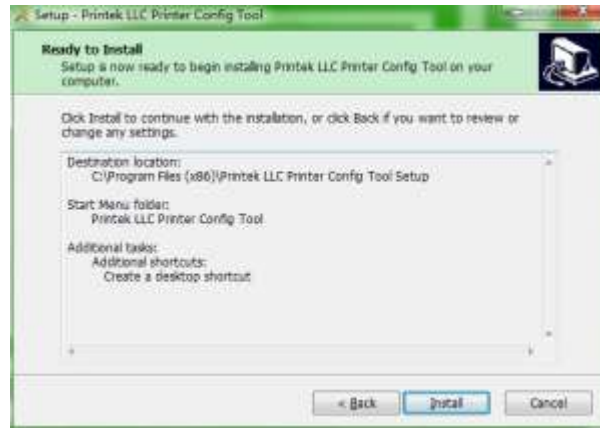


Click Next.

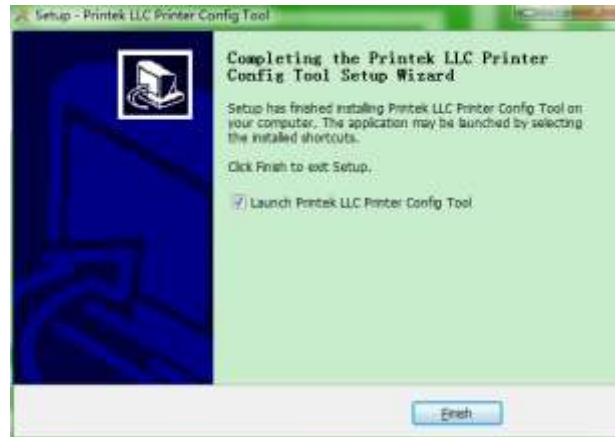


□

Click Install



Click Finish.



3.4 Using Configuration Tool

Open Printek LLC Config Tool



□

Click “Connection Config” and choose current connection port in the upper right corner. Set up relevant interface parameters.

Click “Connect” box to connect to the printer.



Click the “Settings” button to enter the Settings Menu.

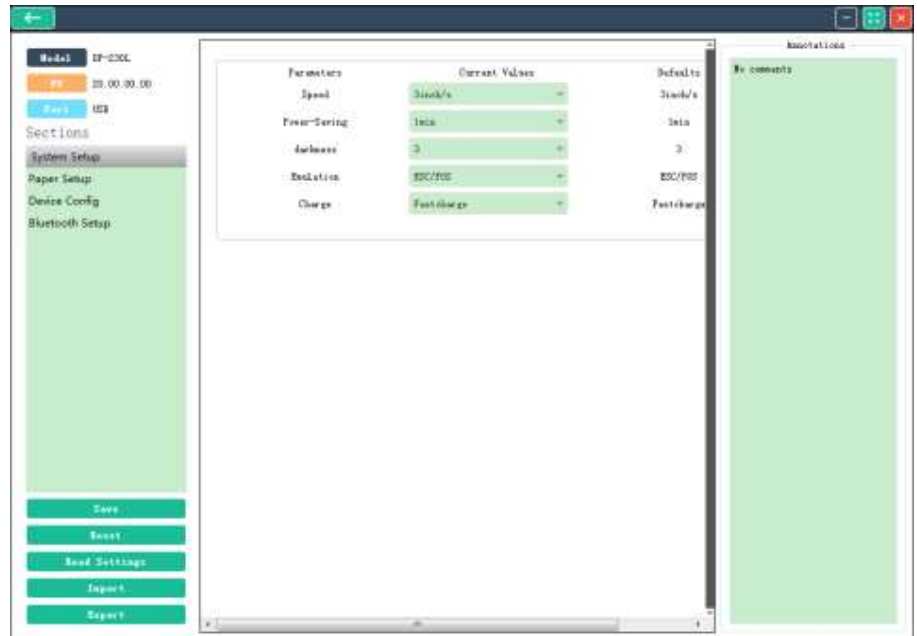


□

3.5 Configuration Settings

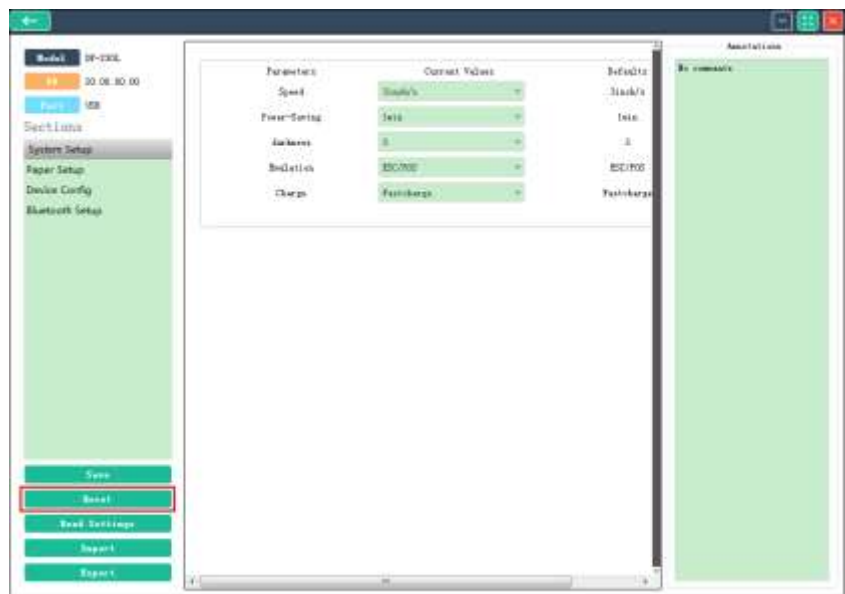
Click on the items you wish to modify.

Select the value and then click Save button to complete settings.



3.6 Reset factory default settings

Click the "Reset" button on lower left side of settings page. Click "OK" in pop-up confirmation dialog box.



□

4 Software upgrade

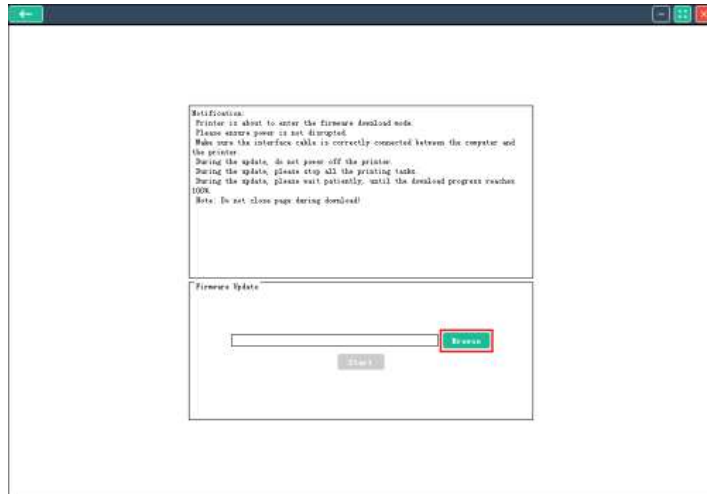
4.1 Software upgrade steps

To upgrade software connect printer to the computer with USB cable.

Open the Printek LLC Config Tool. Click “Upgrade”

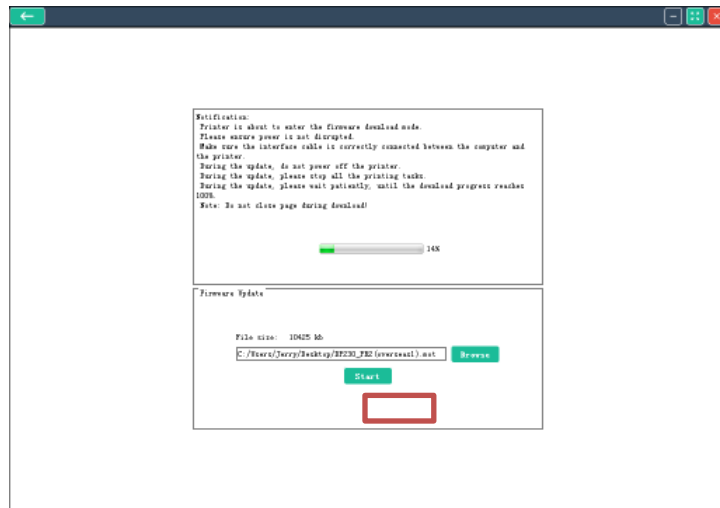


Click “Browse” to select the firmware file.

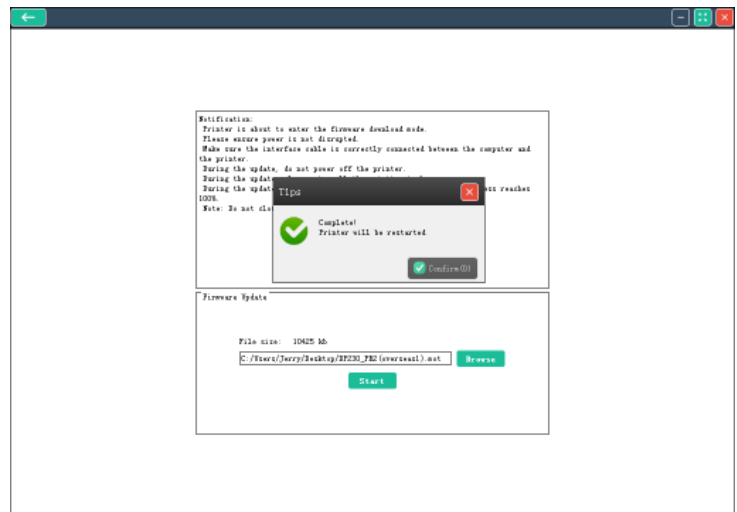


□

After selecting the file click “Start”.



After the update, the Printek LLC Config Tool pops up to tell you that the update is complete. The printer automatically restarts.



4.2 Hexadecimal Mode:

To enter hexadecimal, in the boot state, press power key twice quickly. To indicate the printer has entered hexadecimal mode, the following will print; [hexadecimal mode]

To exit hexadecimal mode, restart the printer.

□
5 Communication

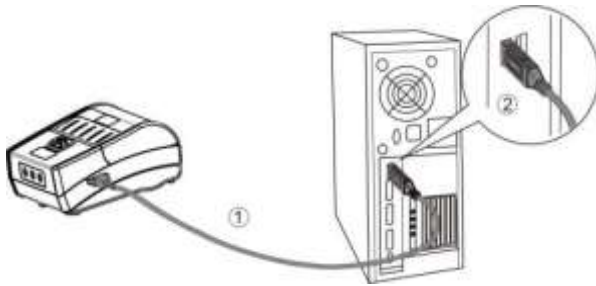
There are three communication modes

Wire: USB

Wireless: Bluetooth or Wi-Fi

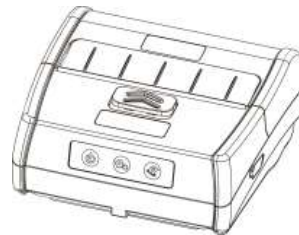
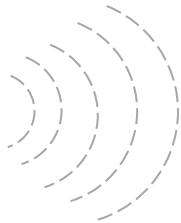
5.1 USB

Plug the USB end of cable into the host USB port and plug universal type C connector to the printer



5.2 Bluetooth

The MLP-35 has a 4.0/CLASS 2 (10m) Bluetooth communication interface.

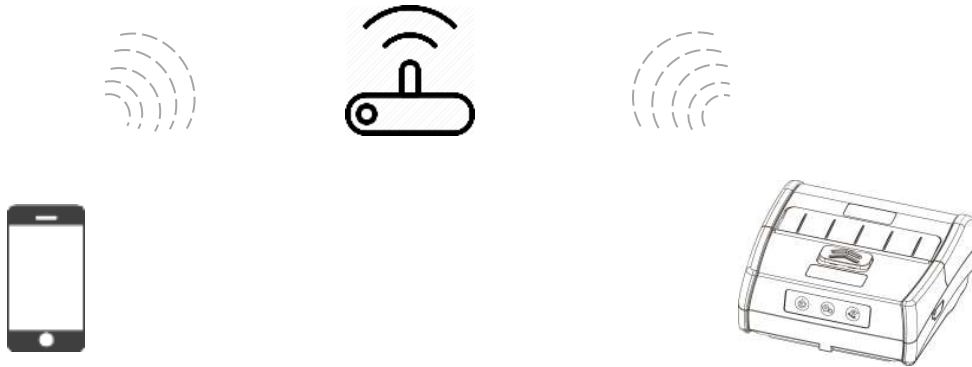


Device name: MLP-35-XXXX

□

5.3 Wi-Fi

The MLP-35 supports WiFi/IEEE 802.11 b/g/n standard communication. Wi-Fi can support AP mode and STA mode. The networking mode is convenient and diverse with a strong signal strength. Maximum distance for Wi-Fi communication is 300m.



The default communication mode is AP mode.

When setting up the printer wirelessly, please use the Printek LLC Config Tool

□

6 Maintenance

6.1 Daily Printer Maintenance

To clean outside case and paper bin, gently wipe with moist cloth. Be sure to fully dry.

Clean print head mechanism with thermal cleaning pen, or with a degreasing cotton with anhydrous alcohol.

If you do not use the printer regularly, store battery separate from printer.

6.2 Use and storage of paper

Avoid storing paper in direct sunlight or in high temperature.

Storing printed documents at room temperature (approx. 20C or 68F) can prolong the retention time of documents.

□
7 Maintenance

7.1 Troubleshooting

Problem	Possible Cause	Solution
Press the power button and the printer does not work.	The battery has not been installed correctly.	Install the battery correctly.
	The battery has run out of power.	Charge immediately.
Printer automatically shuts down.	The battery has run out of power.	Charge or replace the battery immediately.
	Electrostatic discharge	Restart the printer.
The power light is off when the power adapter is connected.	Power adapter does not power on.	Check if the power adapter is properly connected.
	Power adapter is damaged.	Use the voltmeter to check if the adapter voltage is 5VDC
	The battery has not been installed correctly.	Install the battery correctly.
Cannot charge the battery.	Battery damage or adapter has quality issue.	You can try to replace battery or adapter.
Poor print quality or ink fades.	Mechanism contaminated with paper dust.	Clean the mechanism. Cleaning pens available from Printek.
	Quality problems of printing Paper	Please purchase approved Media.
No paper feeding.	There is a jam in the paper path, or the media is loaded in reverse.	Check the paper path and install the media again.
	Poor quality of printing paper	Please purchase approved Media.
	Paper door is not closed.	Be sure the paper door latches when closing.
Only feeding paper, no printing.	The media is loaded in reverse.	Load the paper correctly according to this user guide.
Can't feed the paper steadily to the label.	Label / Media Sensor contaminated	Cleaning sensor
	Printer does not power on to setup the label Paper fully.	Restart the printer.
	Label threshold is incorrect.	Adjust label threshold
The printer is not stable or prints all the content together.	Poor quality of printing paper	Please purchase approved Media.
	Use the media with sliding layer.	Reduce maximum print speed
	Paper door is not closed.	Be sure the paper door latches when closing.
The printout is garbled.	Emulation language or data code system is not correct.	Setup the correct emulation language and data code system.
The printer accepted the print data but did not print it.	Low voltage	Please check and charge.
	Media has not been properly loaded.	Properly load media.
	Emulation language or data code system is not correct.	Setup the correct emulation language and data code system.
The printer is not printing through the optional interface.	The interface setting is not correct.	Print the self-test page and correct the interface setting.

□

8 Printer Specifications

Printing parameters	Printing mode	Directly thermal
	Print width	72mm
	Resolution	203dpi
OLED screen	Standard	128×32dot matrix
Speed	Speed	3inch/s
	Emulation	ESC/POS、JPL、ZIC、ZPLII、CPCL
	Character	GB18030
	Barcode	One dimensional code: UPC-A、UPC-E、EAN-8、 QR code: QRCode、PDF417、DataMatrix
Media	Type	Thermal paper / thermal label
	Thickness	60-150μm
	Width	80mm
	Maximum outer diameter	45mm
Sensor	Open sensor	Yes
	Paper end sensor	Yes
	Label sensor	Optional
Memory	SDRAM	32Mbyte (Integrated into the SOC)
	Flash	8+32Mbyte (2 PCS)

9 Accessories

<i>Part Number</i>	<i>Description</i>
93361	Carrying Strap
34260008	Belt Loop Case
99635	Battery
??????	AC Adaptor